

# MSLGP90 | 90mm Luminaire Pole



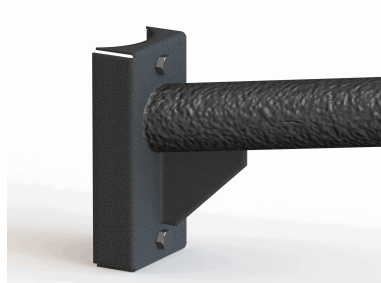
The Luminaire pole has two circular dimensions. The first being the pole that it is attached to, the second is the outside diameter of the pole which the luminaire is inserted on to. All standard luminaire poles are 600mm long. All luminaire poles are welded, hot-dipped galvanized and powder coated black. Other colour options are available on request. Pole Dimension: 90mm – Luminaire Pole Dimension: 60mm – Rake angle – 10 Degrees

## Details

PoleLength

PoleSize

90



## Installation Options

Standard Pole

Stepped Pole

Base-Plate Pole

Wall Pole

